



**PARTS LIST FOR
NO. 2 SERIES MULTI-SERIES TOOLS
PISTOL HANDLE (RAPID REVERSE)
(SERIAL M)**

Form Z156
Date 4-98/A
Page 1 of 6

PISTOL HANDLE & AIR MOTOR

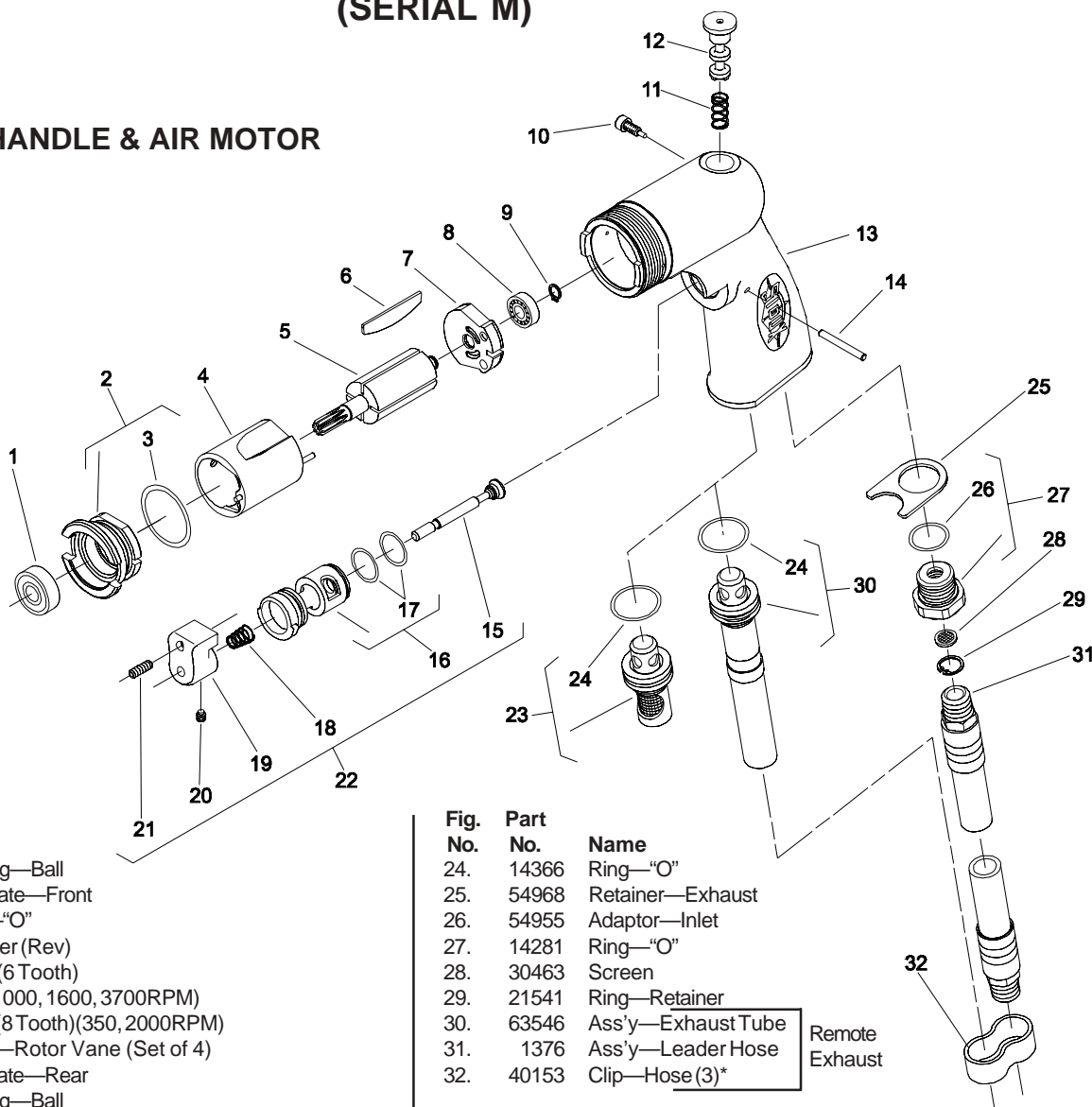


Fig. No.	Part No.	Name
1.	10220	Bearing—Ball
2.	13550	End Plate—Front
3.	14342	Ring—"O"
4.	33738	Cylinder (Rev)
5.	44930	Rotor (6 Tooth) (600, 1000, 1600, 3700RPM)
	44511	Rotor (8 Tooth)(350, 2000RPM)
6.	33737	Ass'y—Rotor Vane (Set of 4)
7.	13161	End Plate—Rear
8.	10230	Bearing—Ball
9.	21491	Ring—Retaining
10.	06502	Screw—Retaining
11.	21427	Spring
12.	44426	Spool—Valve (Non-Locking)
	44316	Spool—Valve (Locking)
13.	65219	Housing
14.	40157	Pin—Dowel (1/8 X 1-1/8)
15.	54222	Valve
16.	11600	Body—Valve
17.	14378	Ring—"O" (2)*
18.	21401	Spring
19.	12676	Trigger
20.	06458	Screw—Set (#8-32 X 3/16)
21.	06459	Screw—Set (#8-32 X 1/2)
22.	63359	Ass'y—Trigger
23.	63545	Ass'y—Silencer

Fig. No.	Part No.	Name
24.	14366	Ring—"O"
25.	54968	Retainer—Exhaust
26.	54955	Adaptor—Inlet
27.	14281	Ring—"O"
28.	30463	Screen
29.	21541	Ring—Retainer
30.	63546	Ass'y—Exhaust Tube
31.	1376	Ass'y—Leader Hose
32.	40153	Clip—Hose(3)*

COMPLETE ASSEMBLY—PISTOL HANDLE

65222 Ass'y—Housing (Rev)
(Includes Fig's 13-29)

COMPLETE ASSEMBLIES—AIR MOTORS

65228 Ass'y—Motor (6 Tooth)(Rev)
(600, 1000, 1600, 3700RPM)
(Includes Fig's 1-9)

65220 Ass'y—Motor (8 Tooth)(Rev)
(350, 2000RPM)
(Includes Fig's 1-9)

*Order Quantity As Required

**FURNISH CATALOG, SERIAL, AND MODEL NUMBER
WHEN ORDERING PARTS**

**SIouxTM
TOOLS INC.**

2901 FLOYD BOULEVARD ■ PO BOX 507 ■ SIOUX CITY, IOWA 51102-0507 USA ■

Printed In U.S.A.

SINGLE REDUCTION GEAR CASE (1600, 2000, 3700RPM UNITS)

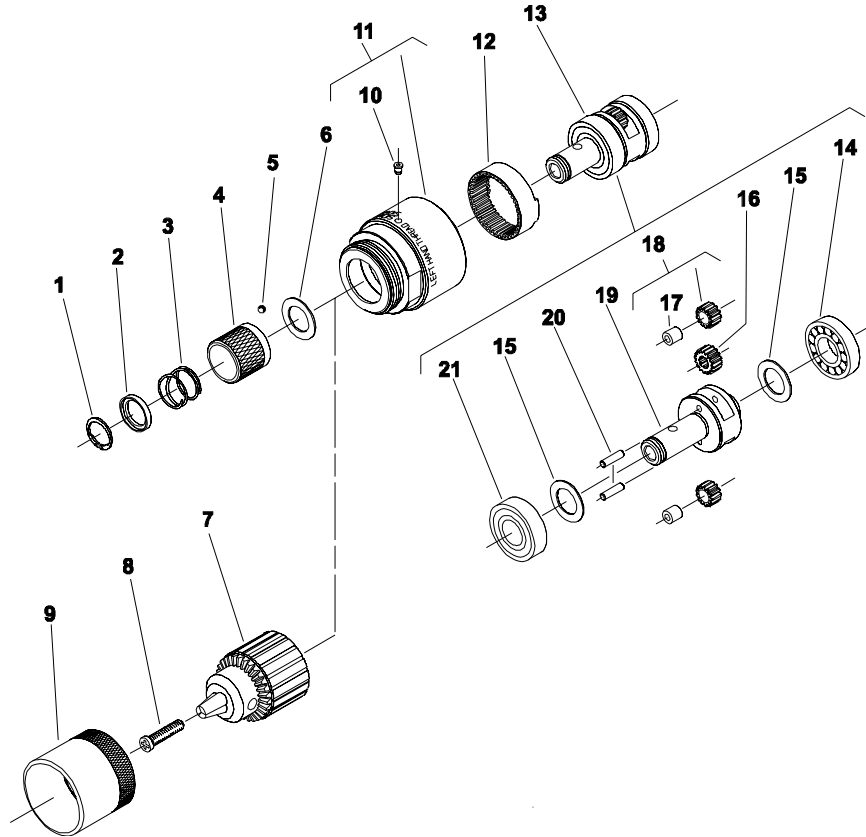


Fig. No.	Part No.	Name	
1.	21501	Ring—Retainer	Stall Drive
2.	44660	Ring—Guide	
3.	21406	Spring	
4.	44161	Retainer—Ball	
5.	10902	Ball—Steel	
6.	25439	Washer	
7.	21077	Chuck (0—1/4 Cap)	
	21133	Chuck (0—3/8 Cap)	
	30000	Key—Chuck (For 1/4" Chucks)	
	30002	Key—Chuck (For 3/8" Chucks)	
8.	57250	Screw (M5 X .8 X 20 LH)	
9.	34952	Shield—Chuck (1/4" Cap)	Requires Gear Case With Threads
	34951	Shield—Chuck (3/8" Cap)	
10.	30375	Fitting—Grease	
11.	54974	Case—Gear (Stall Drive)(Without Threads)	
	64004	Case—Gear (Screwdriver, Nutrunner, Drill, Clinch Nut)(With Threads)	
12.	19265	Gear—Ring	
13.	63387	Ass'y—Planetary Reduction (1600RPM)	Screwdriver & Nutrunner
	63378	Ass'y—Planetary Reduction (2000RPM)	
	63382	Ass'y—Planetary Reduction (3700RPM)	Drills
	63388	Ass'y—Planetary Reduction (1600RPM)	
	63379	Ass'y—Planetary Reduction (2000RPM)	Stall Drive (Includes Figs. 1—6)
	63383	Ass'y—Planetary Reduction (3700RPM)	
	43744	Ass'y—Planetary Reduction (1600RPM)	
	63380	Ass'y—Planetary Reduction (2000RPM)	Clinch Nut
	63384	Ass'y—Planetary Reduction (3700RPM)	
	63136	Ass'y—Planetary Reduction (1600RPM)	
	63381	Ass'y—Planetary Reduction (2000RPM)	
14.	10203	Bearing—Ball	
15.	25439	Washer (2)*	
16.	19267	Gear—Pinion (3700RPM)	
17.	10040	Bearing—Needle (2)*	

Fig. No.	Part No.	Name	
18.	19317	Ass'y—Gear & Bearing (1600RPM)(2)*	Screwdriver & Nutrunner
	19314	Ass'y—Gear & Bearing (2000RPM)(2)*	
	19331	Ass'y—Gear & Bearing (3700RPM)(2)*	
19.	22700	Carrier—Gear (1600RPM)	Drills 3/8-24 Thd
	64162	Carrier—Gear (2000RPM)	
	64161	Carrier—Gear (3700RPM)	
	22699	Carrier—Gear (1600RPM)	Stall Drive & Clinch Nut
	64163	Carrier—Gear (2000RPM)	
	64164	Carrier—Gear (3700RPM)	
	22664	Carrier—Gear (1600RPM)	Stall Drive & Clinch Nut
	64157	Carrier—Gear (2000RPM)	
	64158	Carrier—Gear (3700RPM)	
20.	30062	Pin (2)*	
21.	10228	Bearing—Ball	

*Order Quantity As Needed

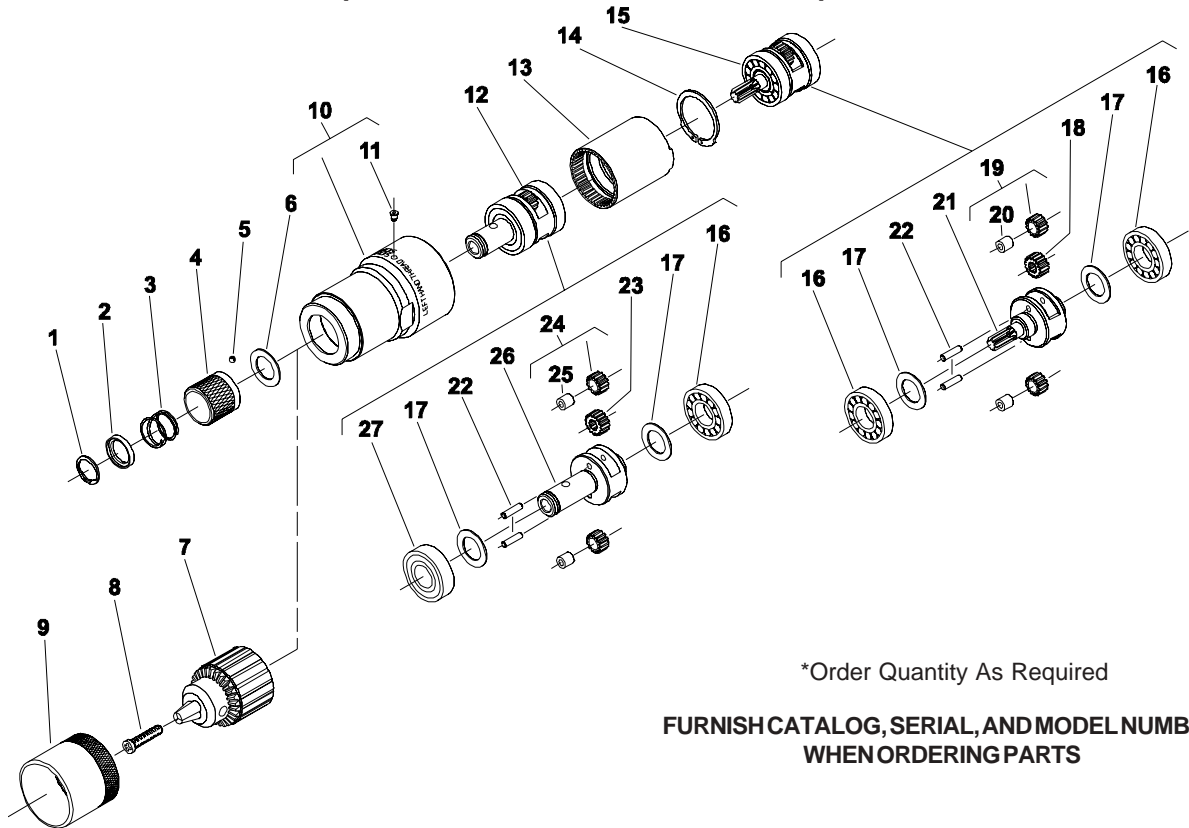
COMPLETE ASSEMBLY

63462	Ass'y—Gear Case Complete (1600RPM)	Screwdriver & Nutrunner (Includes Figs. 10—13)
63463	Ass'y—Gear Case Complete (2000RPM)	
63473	Ass'y—Gear Case Complete (1600RPM)	Stall Drive (Includes Figs. 1—6, 10—13)
63474	Ass'y—Gear Case Complete (2000RPM)	
63475	Ass'y—Gear Case Complete (3700RPM)	Clinch Nut (Includes Figs. 10—13)
63479	Ass'y—Gear Case Complete (1600RPM)	
63480	Ass'y—Gear Case Complete (2000RPM)	

*Order Quantity As Required

**FURNISH CATALOG, SERIAL, AND MODEL NUMBER
WHEN ORDERING PARTS**

DOUBLE REDUCTION GEAR CASE (350, 600, 1000RPM UNITS)



*Order Quantity As Required

**FURNISH CATALOG, SERIAL, AND MODEL NUMBER
WHEN ORDERING PARTS**

Fig. No.	Part No.	Name	
1.	21501	Ring—Retaining	Stall Drive
2.	44660	Ring—Guide	
3.	21406	Spring	
4.	44161	Retainer—Ball	
5.	10902	Ball—Steel	
6.	25439	Washer	
7.	57250	Screw (M5 X .8 X 20 LH)	
8.	21077	Chuck (0-1/4" Cap)	
	21133	Chuck (0-3/8" Cap)	
	30000	Key—Chuck (For 1/4" Chucks)	
	30002	Key—Chuck (For 3/8" Chucks)	
9.	34952	Shield—Chuck (1/4" Cap)	Requires Gear Case
	34951	Shield—Chuck (3/8" Cap)	With Threads
10.	64003	Case—Gear (Stall Drive)(Without Threads)	
	64002	Case—Gear (Screwdriver, Nutrunner, Drill, Clinch Nut)(With Threads)	
11.	30375	Fitting—Grease	
12.	63378	Ass'y—Planetary Reduction (350, 600RPM)	Screw-driver & Nutrunner
	63382B	Ass'y—Planetary Reduction (1000RPM)	
	63379	Ass'y—Planetary Reduction (350, 600RPM)	
	63383B	Ass'y—Planetary Reduction (1000RPM)	
	63380	Ass'y—Planetary Reduction (350, 600RPM)	
	63384B	Ass'y—Planetary Reduction (1000RPM)	Drills Stall Drive
	63381	Ass'y—Planetary Reduction (350, 600RPM)	
	63385B	Ass'y—Planetary Reduction (1000RPM)	
			(Includes Figs. 1-6)
			Clinch Nut
13.	19266	Gear—Ring	
14.	21510	Ring—Retaining	
15.	63386	Ass'y—Planetary Reduction (350RPM)	
	63377	Ass'y—Planetary Reduction (600RPM)	
	63392	Ass'y—Planetary Reduction (1000RPM)	
16.	10203	Bearing—Ball (3)*	
17.	25439	Washer (4)*	
18.	19267	Gear—Pinion (600, 1000RPM)	

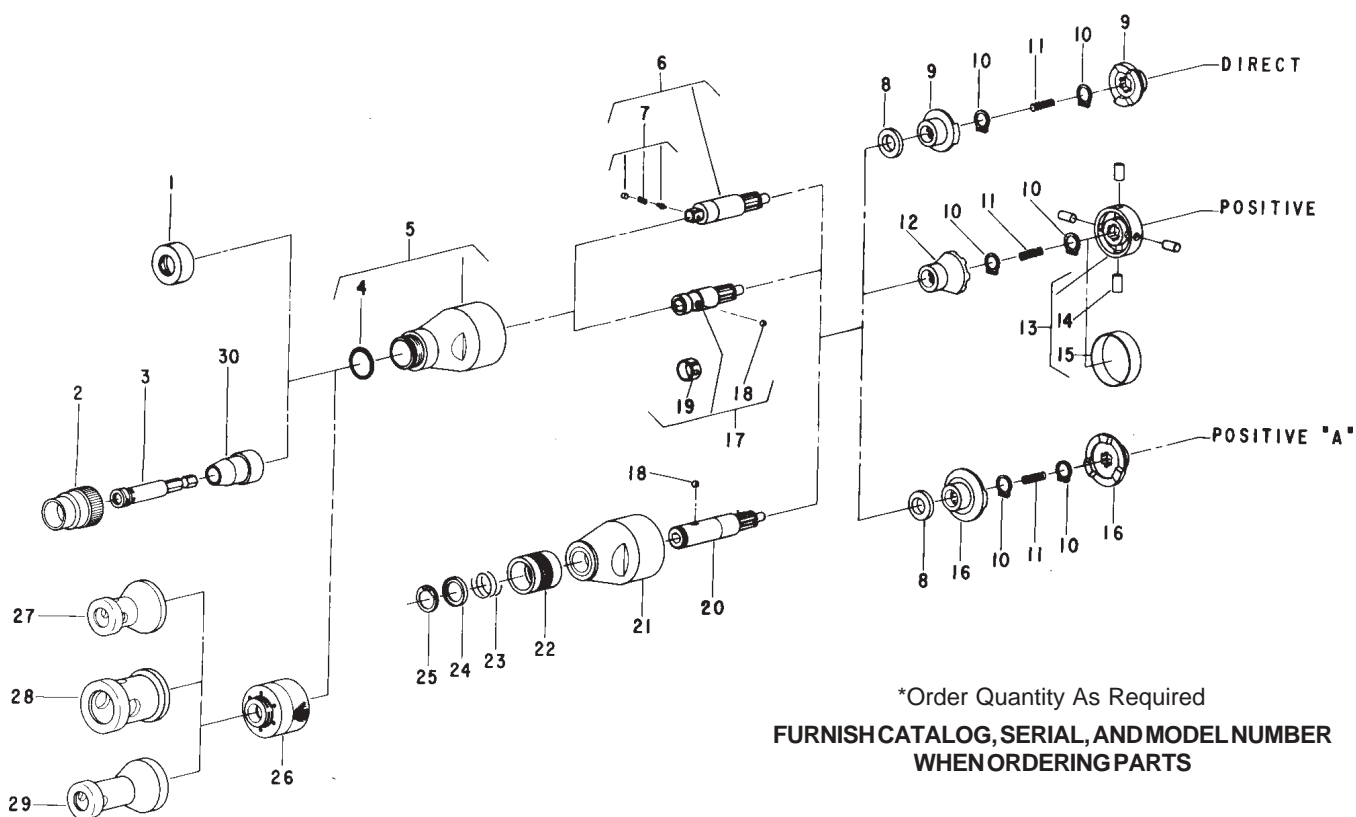
Fig. No.	Part No.	Name	
19.	19314	Ass'y—Gear & Bearing (350, 600RPM)(2)*	
	19331	Ass'y—Gear & Bearing (600, 1000RPM)	
20.	10040	Bearing—Needle (2)*	
21.	64160	Carrier—Gear (350RPM)	
	64159	Carrier—Gear (600RPM)	
	22702	Carrier—Gear (1000RPM)	
22.	30062	Pin (4)*	
23.	19267	Gear—Pinion (350, 600RPM)	
24.	19314	Ass'y—Gear & Bearing (350, 600RPM)(2)*	
	19331B	Ass'y—Gear & Bearing (1000RPM)(2)*	
25.	10515	Bushing (1000RPM)(2)*	
	10040	Bearing—Needle (350, 600RPM)(2)*	
26.	64162	Carrier—Gear (350, 600RPM)	Screwdriver & Nutrunner
	64161	Carrier—Gear (1000RPM)	
	64163	Carrier—Gear (350, 600RPM)	Drills 3/8-24 Thd
	64164	Carrier—Gear (1000RPM)	
	64157	Carrier—Gear (350, 600RPM)	Stall Drive & Clinch Nut
	64158	Carrier—Gear (1000RPM)	
27.	10228	Bearing—Ball	

*Order Quantity As Needed

COMPLETE ASSEMBLY

63459	Ass'y—Gear Case Complete(350RPM)	Screwdriver & Nutrunner (Includes Figs. 10-15)
63460	Ass'y—Gear Case Complete(600RPM)	
63461	Ass'y—Gear Case Complete(1000RPM)	
63470	Ass'y—Gear Case Complete(350RPM)	Stall Drive (Includes Figs. 1-6, 10-15)
63471	Ass'y—Gear Case Complete(600RPM)	
63472	Ass'y—Gear Case Complete(1000RPM)	
63476	Ass'y—Gear Case Complete(350RPM)	Clinch Nut (Includes Figs. 10-15)
63477	Ass'y—Gear Case Complete(600RPM)	
63478	Ass'y—Gear Case Complete(1000RPM)	

DIRECT, POSITIVE, POSITIVE "A" CLUTCHES



*Order Quantity As Required

**FURNISH CATALOG, SERIAL, AND MODEL NUMBER
WHEN ORDERING PARTS**

Fig. No.	Part No.	Description
1.	54076	Protector—Thread
2.	44520	Retainer—Finder (Screwdriver)
3.	2525	Bit Holder—Magnetic (Mag. Only)
4.	14281	Ring—"O"
5.	53100	Case—Clutch
6.	63449	Ass'y—Drive Spindle (1/4" sq.)(Nutrunner)
	63450	Ass'y—Drive Spindle (3/8" sq.)(Nutrunner)
7.	33827	Ass'y—Socket Retainer (1/4" sq.)(Nutrunner)
	33465	Ass'y—Socket Retainer (3/8" sq.)(Nutrunner)
8.	44663	Spacer (Direct and Positive "A")
9.	64039	Clutch—Direct (2)*
10.	21500	Ring—Retainer (2)*
11.	21379	Spring
12.	64040	Clutch—Positive
13.	33630	Ass'y—Roller Cage
14.	34856	Roller (4)*
15.	34854	Ring—Roller Retainer
16.	44662	Clutch—Positive "A" (2)*
17.	63447	Ass'y—Drive Spindle (Screwdriver)
18.	10902	Ball—Retainer (Screwdriver and Quick Change)
19.	25854	Ring—Ball Retainer (Screwdriver)
20.	63448	Ass'y—Drive Spindle (Quick Change) (Includes Figs 18, 22-25)
21.	54469	Case—Clutch (Quick Change)
22.	54468	Retainer—Ball (Quick Change)
23.	21406	Spring (Quick Change)
24.	44660	Ring—Guide (Quick Change)
25.	21501	Ring—Retaining (Quick Change)
26.	5351 1	Ass'y—Depth Locator Base
27.	54103	Nose Piece—Round Locator
	14109	Cap—End

Fig. No.	Part No.	Description
28.	54104	Nose Piece—Fastener Locator
	14110	Cap
29.	54241	Nose Piece—Long Round Locator
	14109	Cap—End
30.	2497	Bushing (Mag. Only)

COMPLETE ASSEMBLY

63481	Ass'y—Complete Clutch (Screwdriver) (Figs 1-5, 17, 8-11)	Direct Clutch
63482	Ass'y—Complete Clutch (Quick Change) (Figs 8-11, 18, 20-25)	
63483	Ass'y—Complete Clutch (Nutrunner 1/4" sq.) (Figs 1, 4-11)	
63484	Ass'y—Complete Clutch (Nutrunner 3/8" sq.) (Figs 1, 4-11)	
63485	Ass'y—Complete Clutch (Screwdriver) (Figs 1-5, 10-15, 17)	Positive Clutch
63486	Ass'y—Complete Clutch (Quick Change) (Figs 10-15, 18, 20-25)	
63487	Ass'y—Complete Clutch (Nutrunner 1/4" sq.) (Figs 1, 4-7, 10-15)	
63488	Ass'y—Complete Clutch (Nutrunner 3/8" sq.) (Figs 1, 4-7, 10-15)	
63489	Ass'y—Complete Clutch (Screwdrivers) (Figs 1-5, 8, 10, 11, 16, 17)	Positive "A" Clutch
63490	Ass'y—Complete Clutch (Quick Change) (Figs 8, 10, 11, 16, 18, 20-25)	
63491	Ass'y—Complete Clutch (Nutrunner 1/4" sq.) (Figs 1, 4-8, 10, 11, 16)	
63492	Ass'y—Complete Clutch (Nutrunner 3/8" sq.) (Figs 1, 4-8, 10, 11, 16)	

ADJUSTABLE CLUTCH

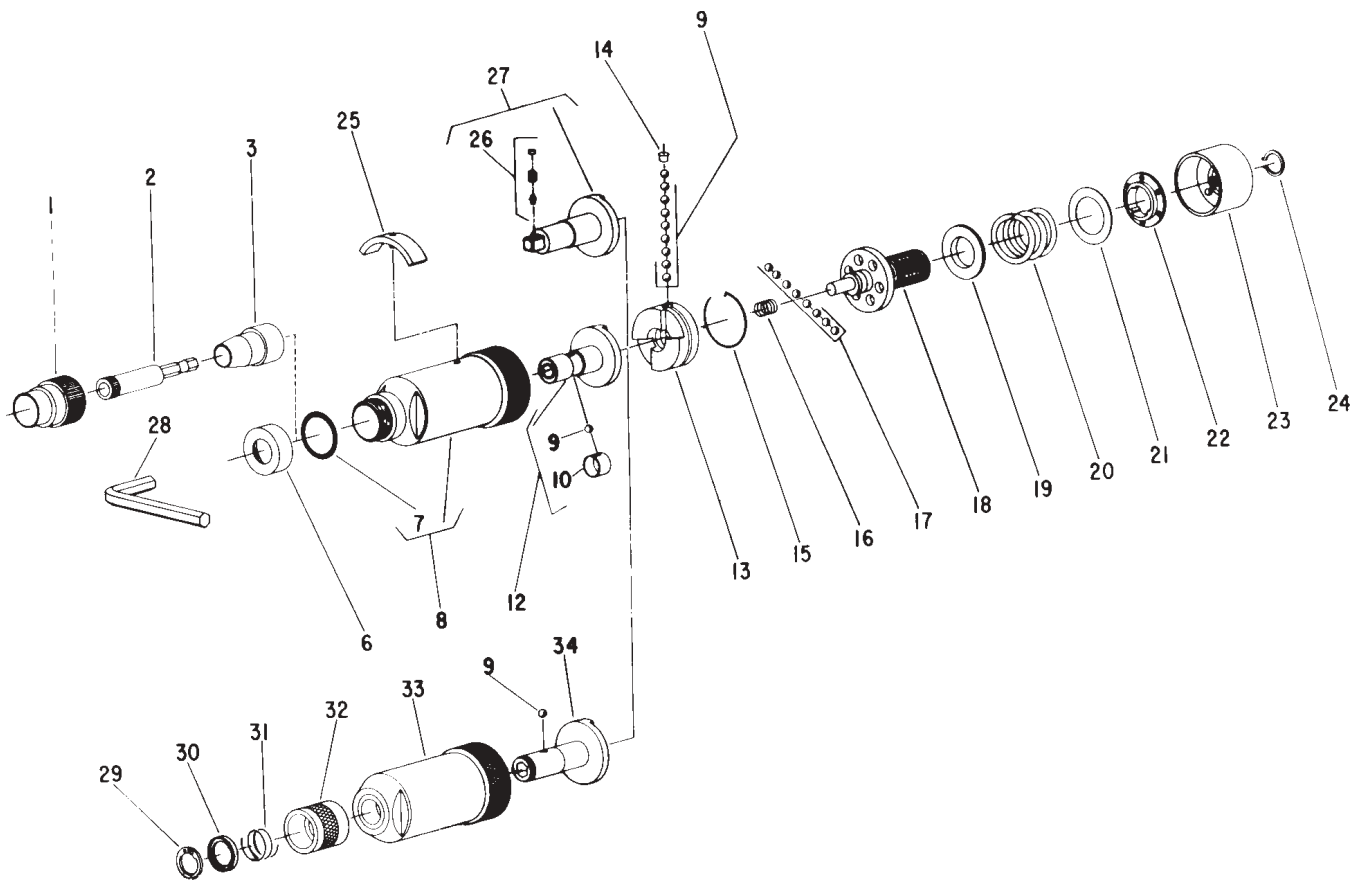


Fig. No.	Part No.	Description
1.	44520	Retainer—Finder
2.	2525	Bit Holder—Magnetic (Mag. Only)
3.	2497	Bushing (Mag. Only)
6.	54076	Protector—Thread
7.	14281	Ring—"O"
8.	53074	Ass'y—Clutch Case
9.	10902	Ball—Steel (10)*
10.	25854	Clip—Retainer
12.	53076	Ass'y—Bit Holder
13.	54071	Jaw—Clutch
14.	54074	Retainer—Ball
15.	21762	Ring—Retaining (Includes Wire & Spiral)
16.	41250	Spring
17.	10291	Ball—Steel (8)*
18.	22669	Spindle—Clutch
19.	54072	Guide—Spring
20.	41249	Spring—Compression (For torque setting above 25 inch pounds)
	41284	Spring—Compression (Green) (For torque setting below 25 inch pounds)
21.	35273	Washer
22.	54073	Washer—Index
23.	53095	Nut—Adjusting
24.	21774	Ring—Retaining
25.	53099	Wrench—Adjusting
26.	33827	Ass'y—Socket Retainer (1/4" sq. Nutrunner)
	33465	Ass'y—Socket Retainer (3/8" sq. Nutrunner)
27.	53082	Spindle—Drive (1/4" sq. Nutrunner)
	53083	Spindle—Drive (3/8" sq. Nutrunner)

Fig. No.	Part No.	Description
26.	30208	Wrench—Allen
29.	21501	Ring—Retaining
30.	44660	Ring—Guide
31.	21406	Spring
32.	54468	Retainer—Ball
33.	54470	Case—Clutch
34.	22677	Holder—Bit

COMPLETE ASSEMBLY

53090	Ass'y—Adjustable Clutch Complete (1/4" Hex Screwdriver)
53089	Ass'y—Adjustable Clutch Complete (3/8" sq. Nutrunner)
53088	Ass'y—Adjustable Clutch Complete (1/4" sq. Nutrunner)
53586	Ass'y—Clutch Case & Bit Holder (Includes Figs. 9, 29-34) (Quick Change Screwdriver)
53085	Ass'y—Adjustable Clutch w/o Bit Holder (Includes Figs. 9, 13-24)

*Order Quantity As Required

FURNISH CATALOG, SERIAL, AND MODEL NUMBER WHEN ORDERING PARTS



PARTS LIST FOR CLINCH NUT TOOLS

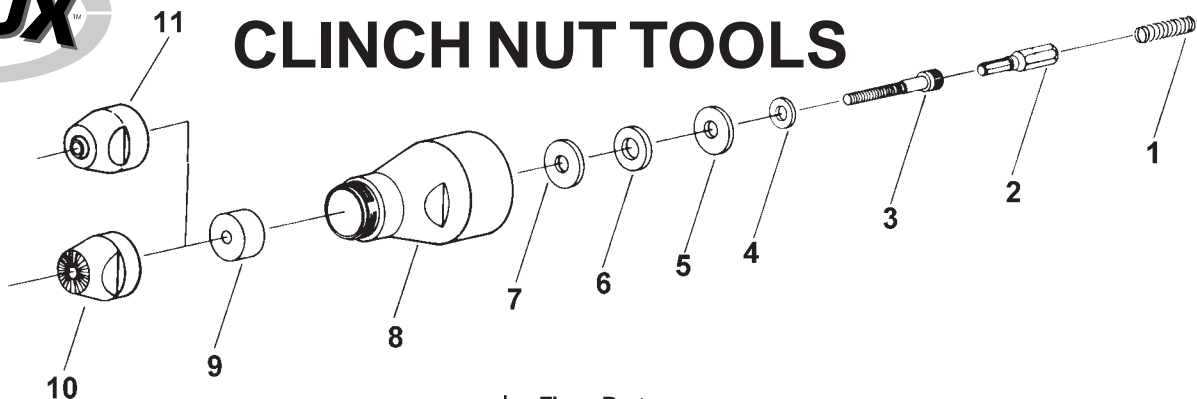


Fig. No.	Part No.	Description
1.	21411	Spring
2.	54907	Bit—Insert (#4)
	54908	Bit—Insert (M3)
	36820	Bit—Insert (#6)
	36821	Bit—Insert (M4)
	2952	Bit—Insert (#8)
	2536	Bit—Insert (#10)
	36822	Bit—Insert (M5)
	36823	Bit—Insert (M6)
	2567	Bit—Insert (1/4")
	54827	Bit—Insert (5/16")
	54910	Bit—Insert (M8)
	54909	Bit—Insert (3/8")
3.	06086	Screw—Soc. Hd. Cap (#4-40 x 1")
	56101	Screw—Soc. Hd. Cap (M3 x 0.5 x 25mm)
	06211	Screw—Soc. Hd. Cap (#6-32 x 1-1/2")
	56203	Screw—Soc. Hd. Cap (M4 x 0.7 x 40mm)
	06603	Screw—Soc. Hd. Cap (#8-32 x 1-1/2")
	07085	Screw—Soc. Hd. Cap (#10-32 x 1-1/2")
	57001	Screw—Soc. Hd. Cap (M5 x 0.8 x 40mm)
	57551	Screw—Soc. Hd. Cap (M6 x 1.0 x 50mm)
	08302	Screw—Soc. Hd. Cap (1/4"-20 x 2")
	08796	Screw—Soc. Hd. Cap (5/16"-18 x 2-3/8")
	58551	Screw—Soc. Hd. Cap (M8 x 1.25 x 60mm)
	09085	Screw—Soc. Hd. Cap (3/8"-16 x 2-3/8")
4.	54903	Washer (#4, M3)
	54904	Washer (#6)
	25196	Washer (M4, #8)
	35234	Washer (#10, M5)
	41340	Washer (1/4")(Crown Side Toward Screw Head)
	54825	Washer (5/16", M8)
5.	10077	Washer—Thrust (#4, M3, #6, M4, #8, M6, 1/4")
	67155	Washer—Thrust (#10, M5)(Smaller ID than Fig. 7)
	10079	Washer—Thrust (5/16", M8, 3/8")
6.	10072	Bearing—Thrust (#4, M3, #6, M4, #8, #10, M5, M6, 1/4")
	10078	Bearing—Thrust (5/16", M8, 3/8")
7.	10077	Washer—Thrust (#4, M3, #6, M4, #8, #10, M5, M6, 1/4")
	10079	Washer—Thrust (5/16", M8, 3/8")
8.	54108	Case—Clutch (#4, M3, #6, M4, #8, #10, M5, M6, 1/4")
	54826	Case—Clutch (5/16", M8, 3/8")
9.	54905	Spacer (#6, M4, #8)

Fig. No.	Part No.	Description
	54906	Spacer (5/16", M8, 3/8")
10.	54896	Nosepiece (#4, M3)
	54897	Nosepiece (#6)
	54898	Nosepiece (M4, #8)
	54899	Nosepiece (#10, M5)
	54900	Nosepiece (M6, 1/4")
	54901	Nosepiece (5/16", M8)
	54902	Nosepiece (3/8")
11.	64211	Nosepiece (#10) "T" Series
	64180	Nosepiece (1/4") "T" Series
	64181	Nosepiece (5/16") "T" Series
	64182	Nosepiece (3/8") "T" Series

COMPLETE ASSEMBLY

63287	Ass'y—Installer Head (#4)
63286	Ass'y—Installer Head (M3)
63288	Ass'y—Installer Head (#6)
63289	Ass'y—Installer Head (M4)
63137	Ass'y—Installer Head (#8)
63138	Ass'y—Installer Head (#10)
63290	Ass'y—Installer Head (M5)
63291	Ass'y—Installer Head (M6)
63139	Ass'y—Installer Head (1/4")
63140	Ass'y—Installer Head (5/16")
63292	Ass'y—Installer Head (M8)
63293	Ass'y—Installer Head (3/8")
63594	Ass'y—Installer Head (#10) "T" Series
63586	Ass'y—Installer Head (1/4") "T" Series
63587	Ass'y—Installer Head (5/16") "T" Series
63588	Ass'y—Installer Head (3/8") "T" Series

CONVERSIONKITS

63295	Conversion Kit #4 (Includes Figs. 2-7, 10)
63294	Conversion Kit M3 (Includes Figs. 2-7, 10)
63296	Conversion Kit #6 (Includes Figs. 2-7, 9, 10)
63298	Conversion Kit M4 (Includes Figs. 2-7, 9, 10)
63297	Conversion Kit #8 (Includes Figs. 2-7, 9, 10)
63299	Conversion Kit #10 (Includes Figs. 2-7, 9, 10)
63300	Conversion Kit M5 (Includes Figs. 2-7, 9, 10)
63302	Conversion Kit M6 (Includes Figs. 2, 3, 5-7, 10)
63301	Conversion Kit 1/4" (Includes Figs. 2-7, 10)
63303	Conversion Kit 5/16" (Includes Figs. 2-7, 9, 10)
63304	Conversion Kit M8 (Includes Figs. 2-7, 9, 10)
63305	Conversion Kit 3/8" (Includes Figs. 2, 3, 5-7, 9, 10)

NOTE: Also check figure 8 to see if your conversion requires a different clutch case.

*Order Quantity As Required

FURNISH CATALOG, SERIAL, AND MODEL NUMBER
WHEN ORDERING PARTS

SIouxTM
TOOLS INC.

2901 FLOYD BOULEVARD ■ PO BOX 507 ■ SIOUX CITY, IOWA 51102-0507 USA ■

Printed In U.S.A.